

NEWBURY TOWNSHIP

SHIP
RAINBOW

410-105
C. HARRINGTON

537-667

G. M. VIGLIANO
P. C. FALTA
A. K. FREITE

114.75 A

SEC. 2

6

1.25 A

51.52 A

T R A C T O N E

3.40 A

232-595

199-252

2

5

443-949

117 A

Metro-Mark Tool Co. Inc.

203-204
146-148 240A

14 A
24.18 A
R. Kaspinski 485-1012

Blucher
20-247345

R. G. TIMMONS
495-59
51.43 A

7.25 A

23.32 A

6
20.12 A

559-587
W. TIMMONS
1.89 AC

R. G. TIMMONS

FRANKS ROAD

SEC. 3

243-555

58.50 A

E. & R. TIMMONS

396-1
J. Zucker

5 A

392-633

460-372
V. Kenney

5 A

58.73 A

443-791
C. Farran

5 A

418-026
D. Swank

5 A

E. D. Kenney
592-1207 5 A

C. Farran

425-6
M. Munn

24.42 A

345-449
F. H. Fugman

SCALE 1" = 300'

44.42 A

R. G. TIMMONS

R. & E. TIMMONS

254-21

37.89 A

R. & G. TIMMONS

R. E. McLaughlin
891-791 2.91 A

STAFFORD

ROAD

J. R. S. Saphner
57 A

501-587
G. R. Moore
31 A

107-14
C. M. MOCHER
13 A

13-84 A
P. S. HOWE
22-272

18 A
S. M. BISHAN

306-353
C. R. MURPHY
12 A

288-487
R. P. KOWICKI
13 A

25 A

4

509-661

533-1234
364A
KEENE
COOP.

3A
AL. BROCKWAY

246-475-477
1.23 A

11A
1.23 A

241-145
BOWEN
PLASTIC
CORP.

2.4 A

29.5 A

JOHNSON
PLASTICS
CORP.

546-1327
22.013 AC

126-786

W. P. Halagan

A	B	C	D
E	F	G	H
I	J	K	L
M	N	O	P

4 AUBURN TWP.
JAN 1, 1974

3

NEWBURY I W T.

217-866
 453-308
 454-481
 441-353
 114.87 A
 50.58 A
 332-833
 211-388
 233-388
 523-440
 495-740
 40 A
 59 A
 7
 1
 6
 1
 2
 S. PREZY
 E. FRANKS et al.
 E.E. Franks
 R.G. Harves
 1888
 523-312
 F.A.E. SURLE
 W.A.C. Miner

FRANKS
 239-101
 210-321
 195-201
 W.K. Arcuri
 16.02 A
 505-164
 40 A
 20 A
 W.E. Czuprun
 160-173
 16.02 A
 20 A
 16.48 A
 20 A
 502-984
 E.E. Franks
 552-1084
 J.L. Yates
 5 A
 E.A.E. FRANKS
 239-502
 24 A
 M. VOJTKO
 316-60
 50.08 A
 M. VOJTKO
 44.95 A

TRACT ONE
 SEC. 3
 SEC. 4
 SEC. 5
 50.73 A
 C. Farran
 332-633
 42.5-6
 M. Munn
 2442 A
 10 A
 17.34 A
 10 A
 25 A
 25 A
 395-999
 44.42 A
 259-212
 S.E. M. CONTINENZA
 557-1328
 R.L.M. Miska
 288-276
 R.J. REPASS
 243-401
 G.A.M. NELSON
 A. HORAZDOBY
 42.5-221
 A. Olson
 63 A
 39.28 A
 29.87 A
 S. ZOFFIAN
 310-625
 50 A
 20.87 A
 F.A.E. REBRLE
 F. GRECAR
 223-373
 30 A
 224-281 J. LUHACS 2 A
 208-180
 417-144 J.J. LUKCS 1 A
 11.033 A
 320-392
 G. LUPCA
 13.88 A
 M. VOJTKO
 452-219
 AUBURN TWP.
 C. Pulayford et al.

STAFFORD ROAD
 234-154
 576-1307
 T.G. KAM
 470-420
 40 A
 9
 492-66
 F.T. Vargo 20 A
 57 A
 R. BAINES
 3
 372 ac.
 4
 372 ac.
 558-1155 MARKBOURGH PROPERTIES LIMITED
 201-173
 5 A
 V.S.F. LOTHER
 291-59
 11
 67.90 A
 12
 41.72 A
 State of Ohio
 STATE OF OHIO
 Match line

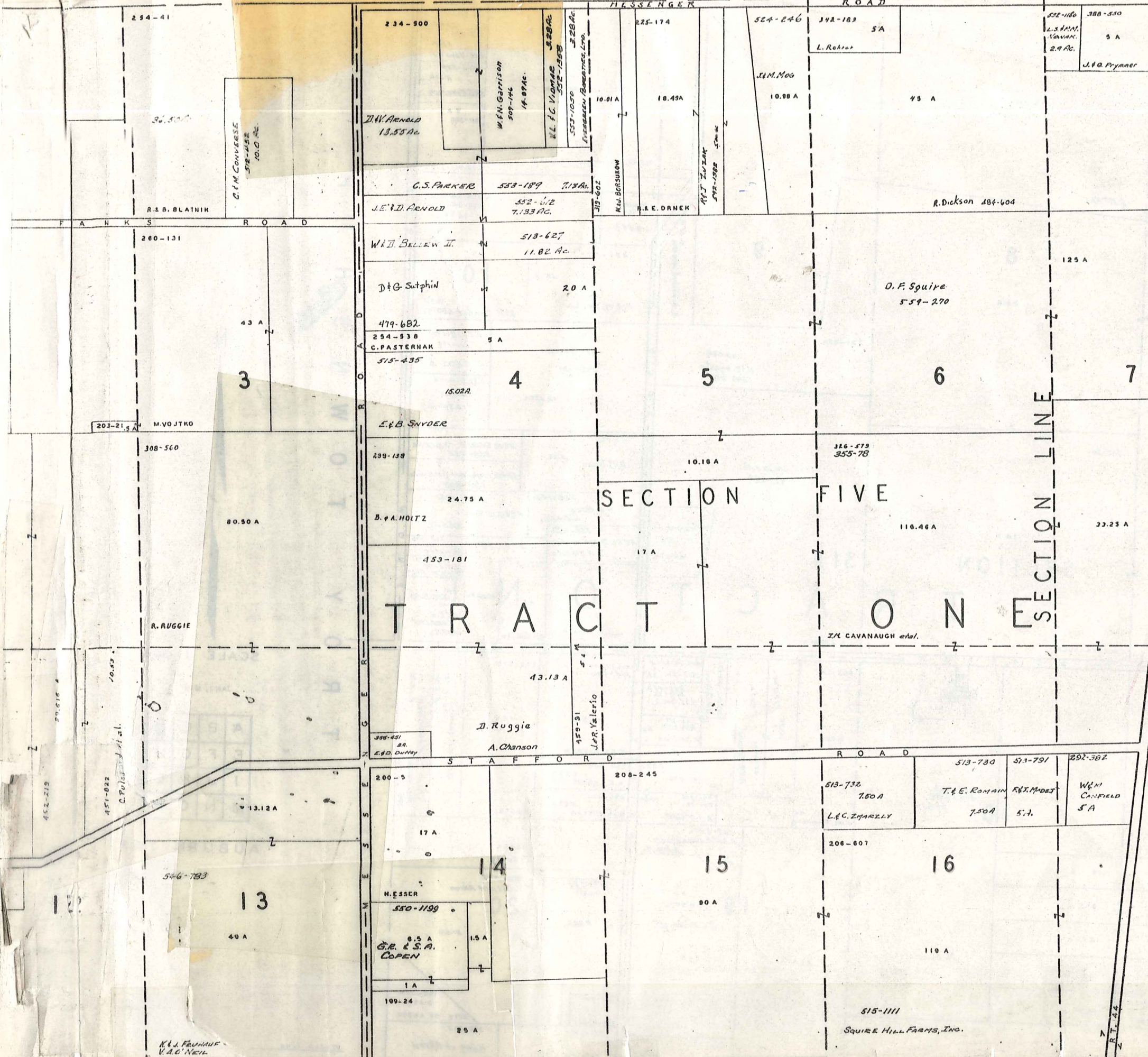
A	B
E	F
I	J
M	N
O	P

AUBURN TWP.

C. Pulayford et al.

State of Ohio

NEW DORSET TOWNSHIP



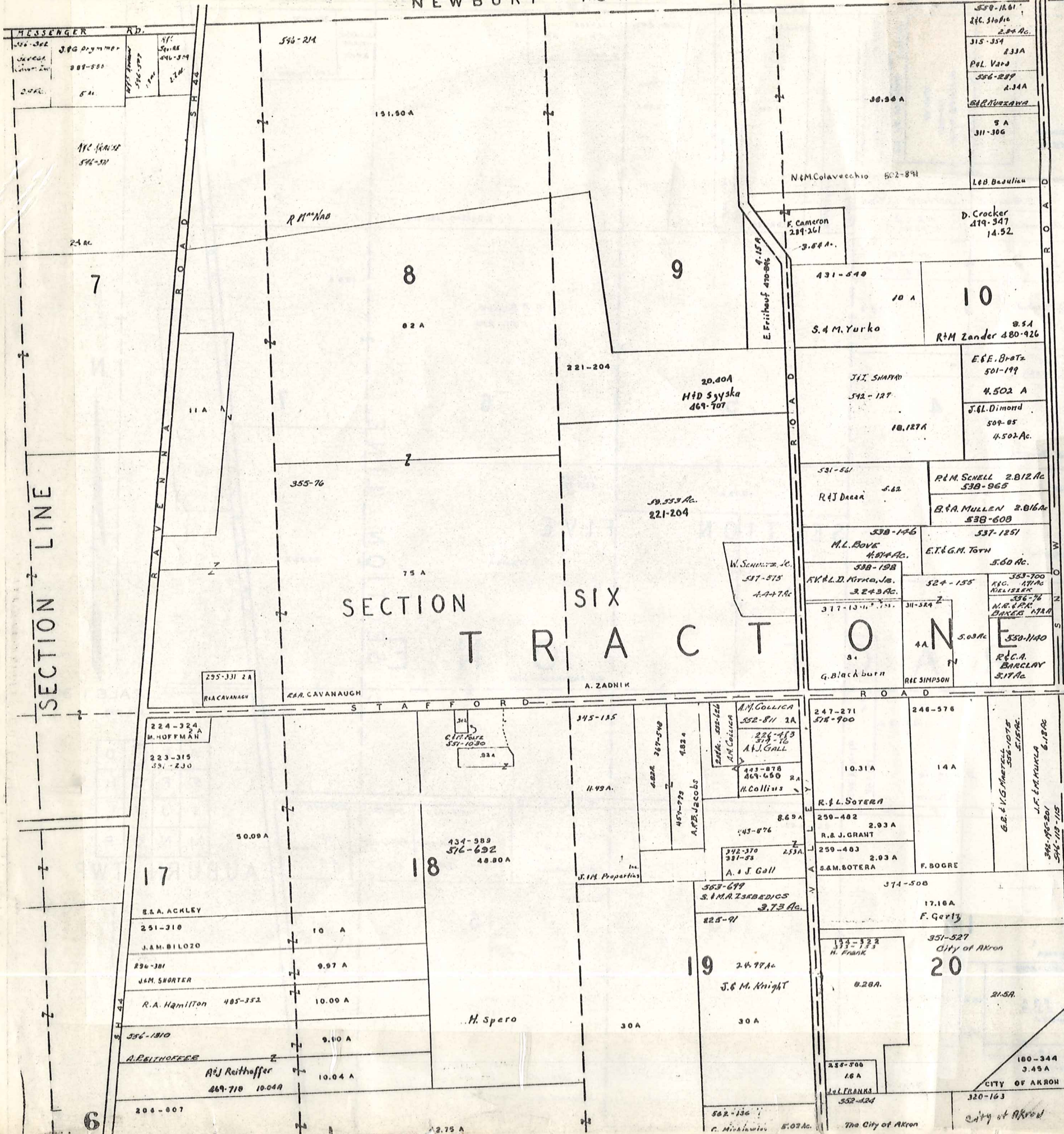
SECTION FIVE

TRACT ON SECTION

SCALE 1 300
JAN 1, 1979

A	B	C	D
E	F	G	H
I	J	K	L
M	N	O	P

AUBURN TWP.



T R O Y T O W N S H I P

SCALE 1 300

JAN 1, 1974

A	B	C	D
E	F	G	H
I	J	K	L
M	N	O	P

AUBURN TWP.

Match Line

BAINBRIDGE TOWNSHIP

SEC. 1
442-95

TRACT ONE

TRACT TWO
SEC. 2

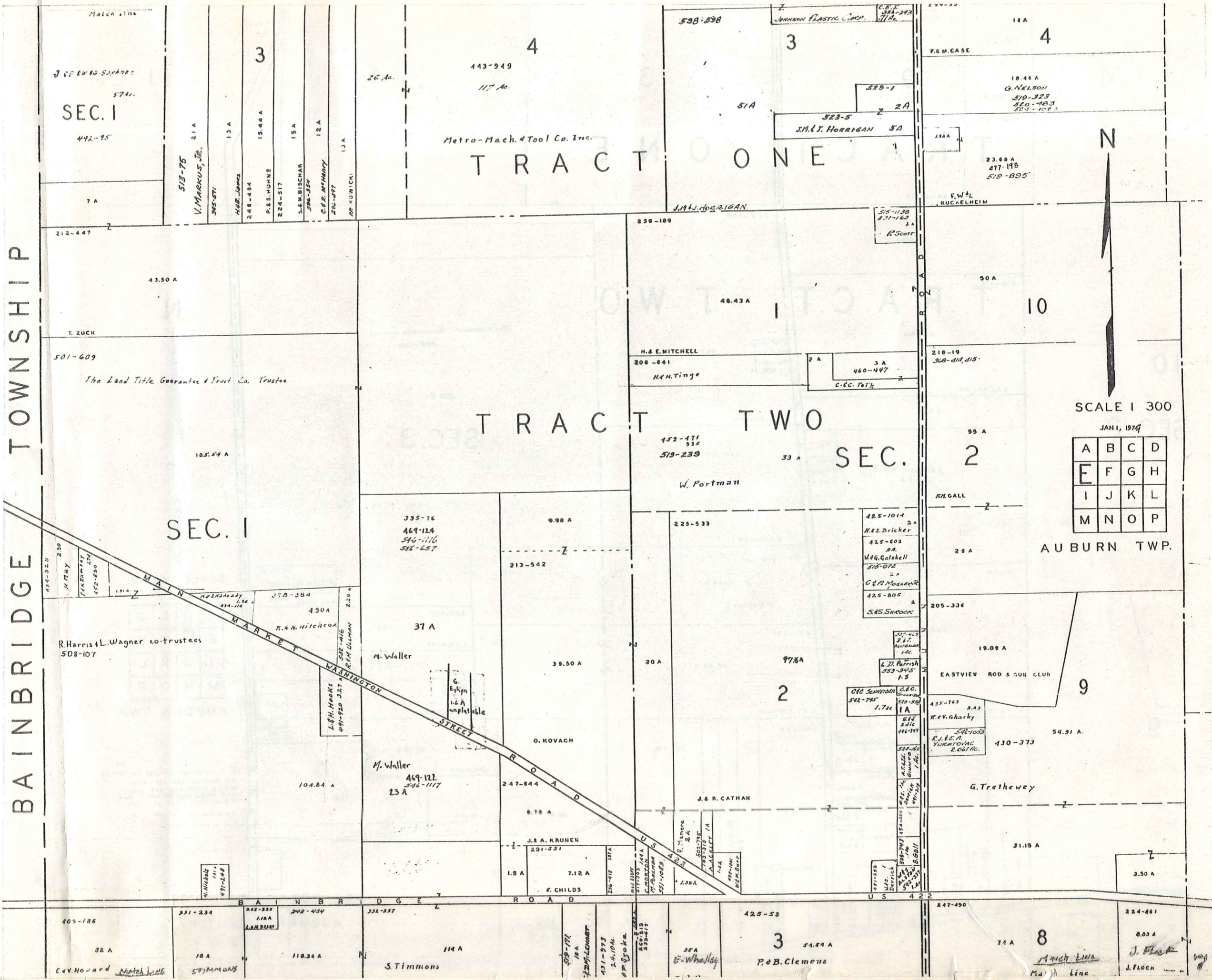
SEC. 1

SCALE 1 300

JAN 1, 1974

A	B	C	D
E	F	G	H
I	J	K	L
M	N	O	P

AUBURN TWP.



SE 1/4 SW 1/4

7 A

212-447

43.50 A

T. ZUCK

501-609

The Land Title Guarantee & Trust Co. Trustee

18.56 A

134-320
H. M. Y
FINDORF
452-850

R. Harris & L. Wagner co-trustees
508-107

105-186

32 A

C. V. Howard

331-234

18 A

S. J. MORGAN

425-334
118 A

118.38 A

S. Timmons

332-257

114 A

S. Timmons

443-949

117 A

Metro-Mach. & Tool Co. Inc.

538-828

3

51 A

J.M.J. HERRIGAN

259-189

48.43 A

H. & E. MITCHELL

206-841

M. H. TINGE

152-171
535
518-239

33 A

W. Portman

335-76
469-124
546-116
536-657

9.90 A

213-542

37 A

M. Waller

39.50 A

20 A

97.8 A

2

O. KOVACH

247-644

8.78 A

J. B. A. KRONEN

231-551

1.5 A

7.12 A

E. CHILDS

J. & R. CATHAN

R. M. MAREE
503-798
783-313
WALKLEY 1 A
10 A
M. J. BERT

1.38 A

425-53

3

P. B. CLEMENS

14 A

4

F. & M. CASE

18.46 A
G. NELSON
519-323
520-483
521-102

23.68 A
477-198
519-895

F. W. RUCKELHEIM

50 A

10

218-19

368-414, 415

95 A

2

R. GALL

28 A

205-336

19.09 A

EASTVIEW ROD & GUN CLUB

9

435-763

Rev. G. Harky

54-1003

R. J. E. A. YURATOVIC

2.061 Ac.

430-373

G. Trethewey

31.15 A

3.50 A

847-490

7 A

8

Arch Line
Main Line

8.03 A

J. Flock

TRACT ONE

TRACT TWO

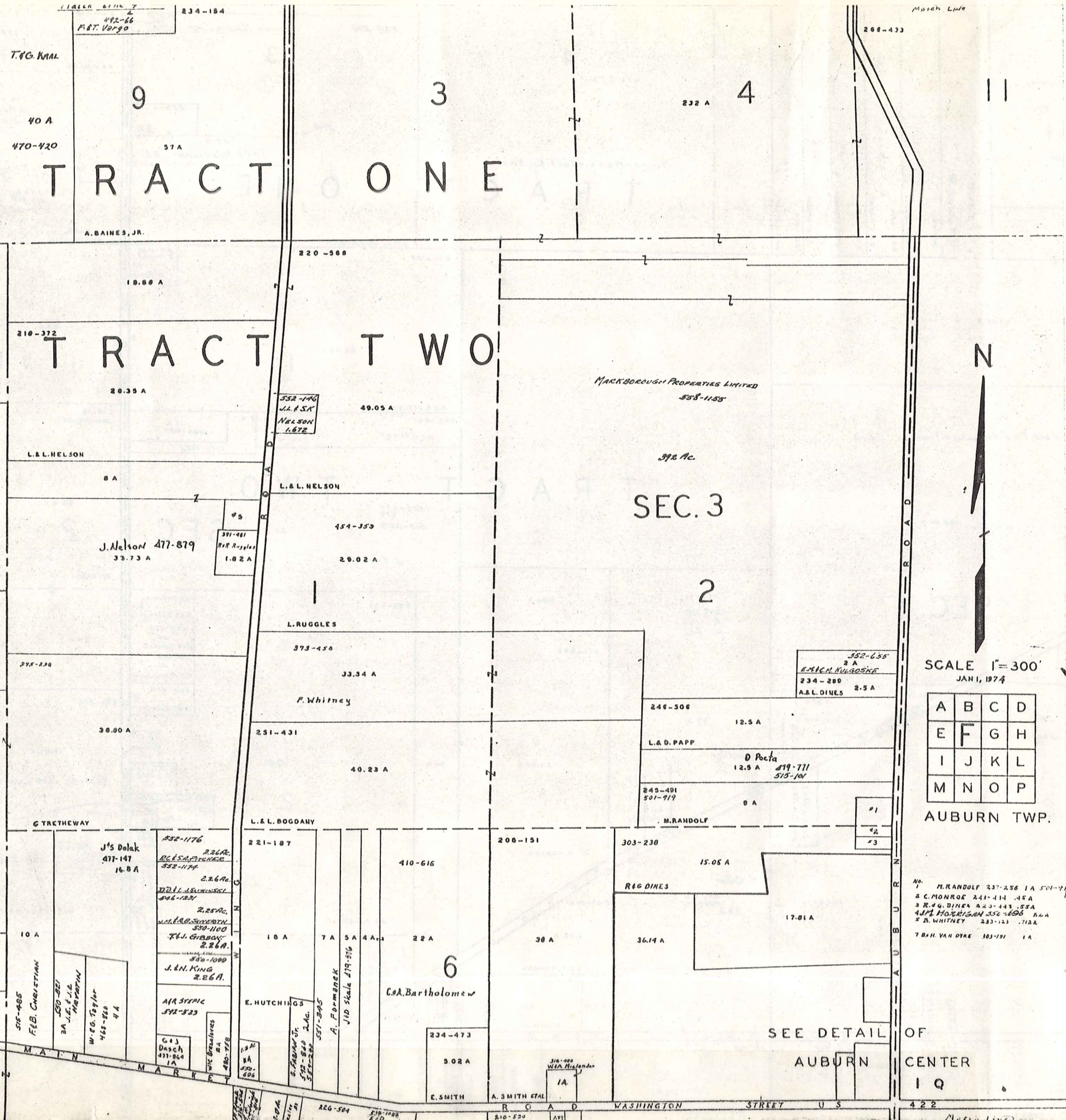
SEC. 3

6

SEC. 2

9

8



SCALE 1"=300'
JAN 1, 1974

A	B	C	D
E	F	G	H
I	J	K	L
M	N	O	P

AUBURN TWP.

No. M. RANDOLF 237-256 1A 501-79
 2 C. MONROE 241-414 45A
 3 R. G. DINES 243-443 55A
 4 J. H. HOBBS 252-606 11A
 5 B. WHITNEY 233-123 712A
 7 B. H. VAN DYKE 303-191 1A

SEE DETAIL OF
AUBURN CENTER

WASHINGTON STREET

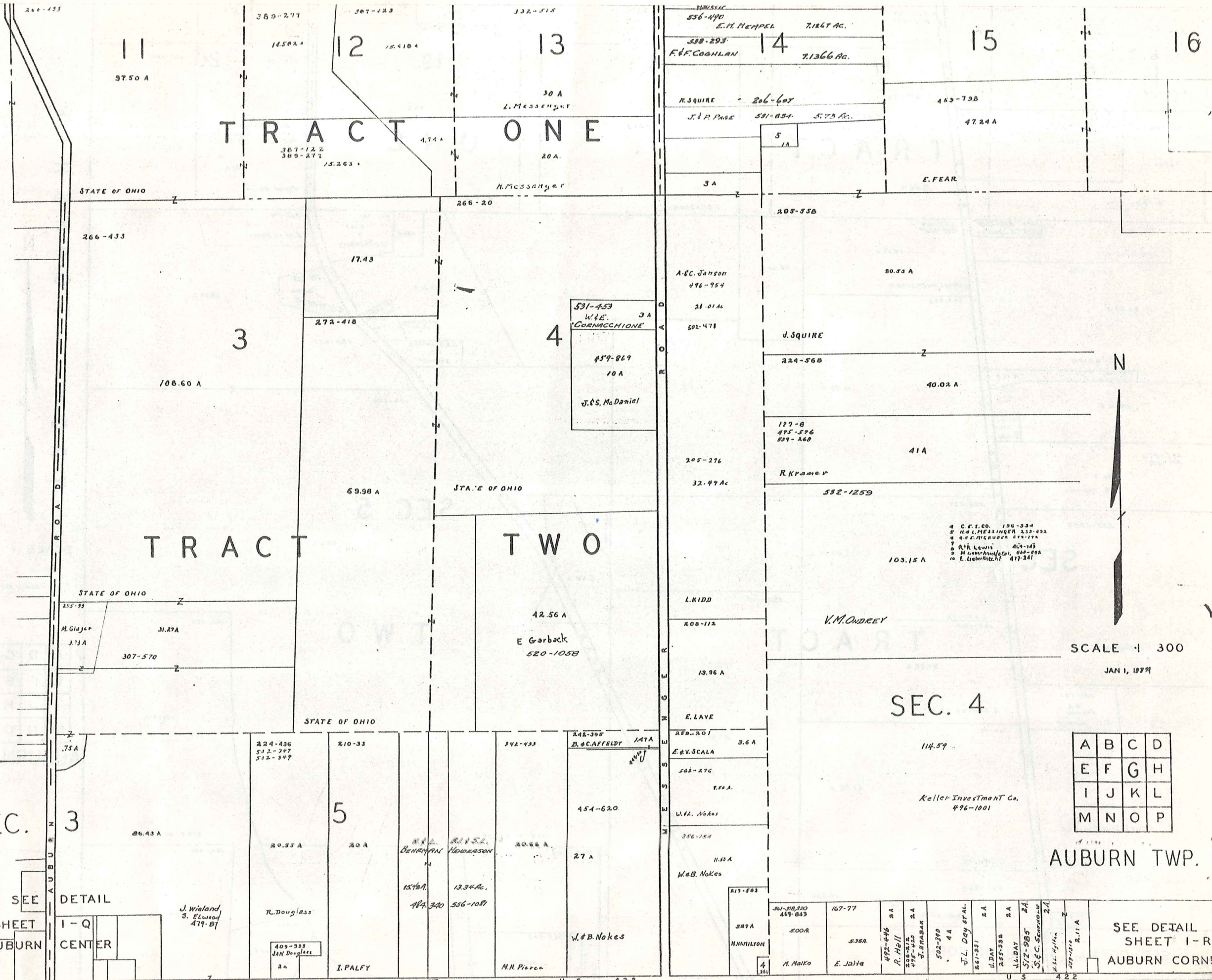
MARKET STREET

WASHINGTON STREET

422

Match line

BY THE BOARD OF TOWNSHIP



TRACT ONE

TRACT TWO

SEC. 3

SEC. 4

AUBURN TWP.

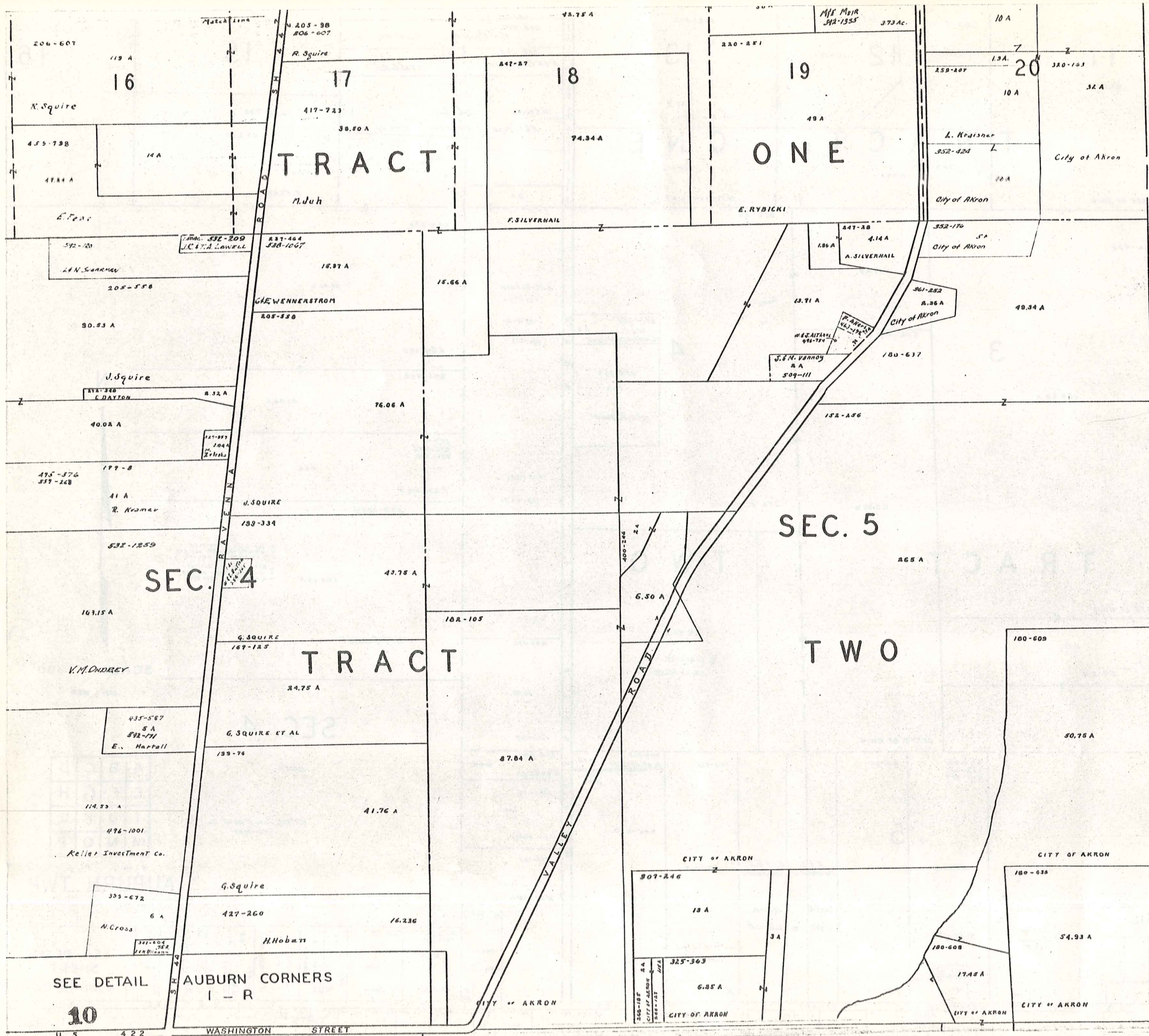
SCALE 1 300
JAN 1, 1929

A	B	C	D
E	F	G	H
I	J	K	L
M	N	O	P

SEE DETAIL SHEET I-Q AUBURN CENTER

SEE DETAIL SHEET I-R AUBURN CORNER

WASHINGTON STREET U S 422



TROY TOWNSHIP



SCALE 1 300

JAN 1, 1974

A	B	C	D
E	F	G	H
I	J	K	L
M	N	O	P

AUBURN TWP

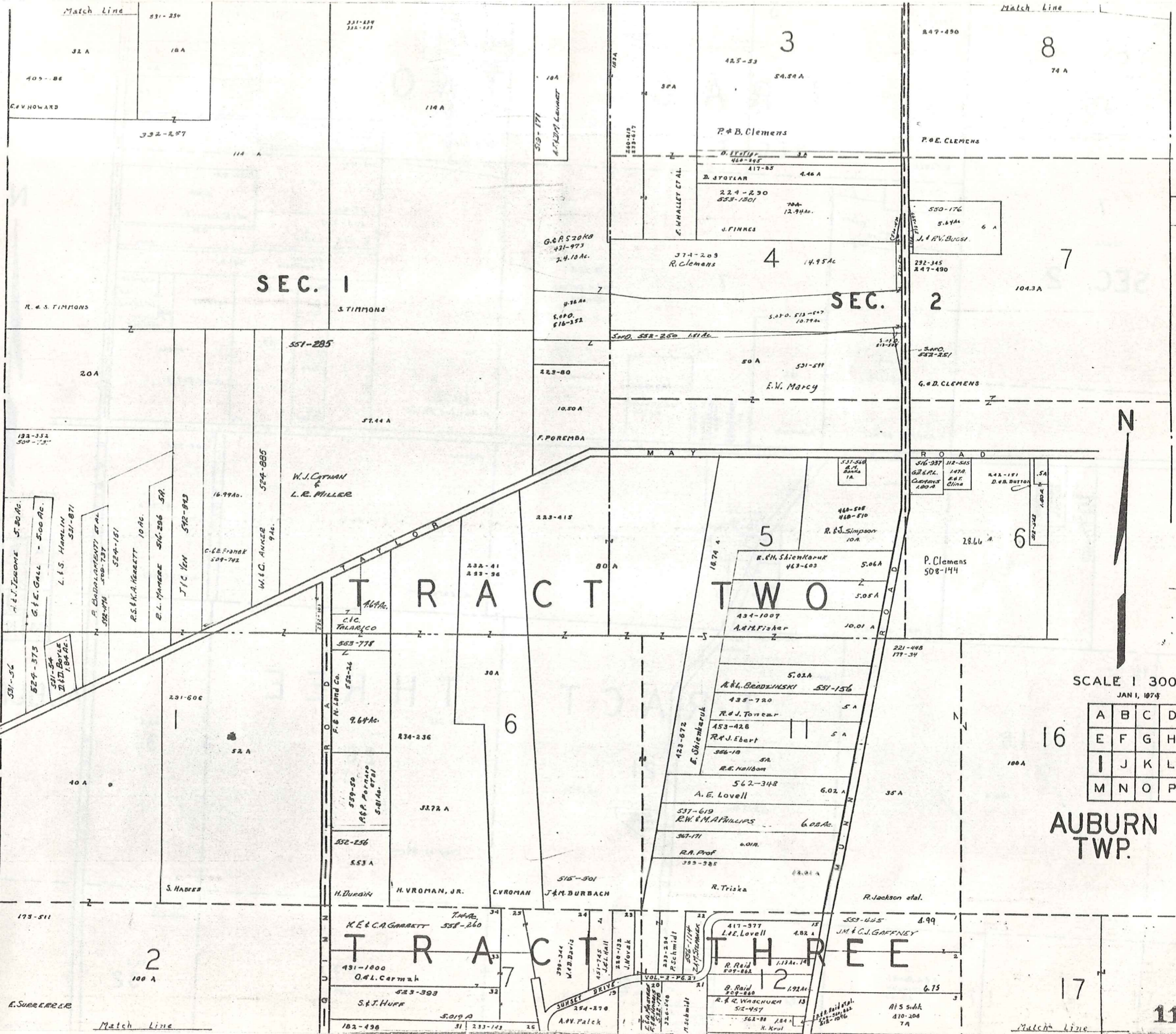
SEE DETAIL

10

AUBURN CORNERS
I - R

WASHINGTON STREET

BAINBRIDGE TOWNSHIP



SEC. 1

SEC. 2

TRACT TWO

TRACT THREE

SCALE 1 300
JAN 1, 1973

A	B	C	D
E	F	G	H
I	J	K	L
M	N	O	P

AUBURN TWP.

11

Match Line

SEE DETAIL SHEET I-Q
AUBURN CENTER

TRACT TWO

SEC 3

SEC. 2

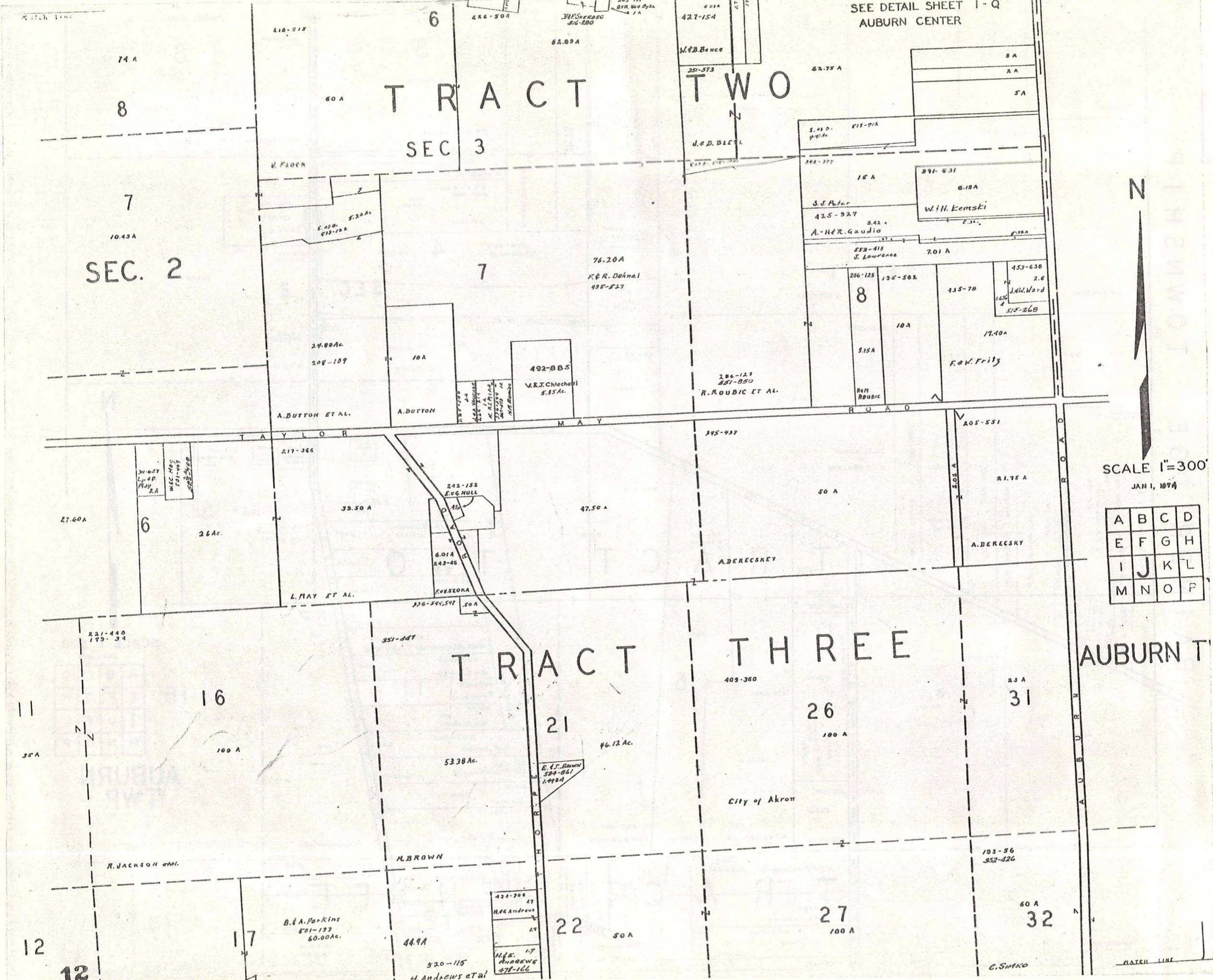


SCALE 1"=300'
JAN 1, 1894

A	B	C	D
E	F	G	H
I	J	K	L
M	N	O	P

TRACT THREE

AUBURN T



MATCH LINE

SEE DETAIL I - R
AUBURN CORNERS

SEE
AUBURN

DETAIL I - Q
CENTER

5

98.25 A
87.09 A
J. Wieland
S. Elwood
119-87

P. Dragomer
29.09 A
85-26 A

M. Kocsany
526-600

10 A
R.R. Baker
220-386

R.R. Lewis

D.C. Romig
463-287

R.G.M. Puckett
542-738

H. Puckett
700 A

SEC. 3

SEC. 4

9

10

T R A C T

T W O

80.00 A
A. Campare
467-615

E. Watson

S.B. Fortes

J. Klima
417-539

F.L. ASCHENBRENER

418-947

W.W. Brown

T A Y L O R M A Y

R O A D

210-616
13.75 A
L.B. Kopas
480-286

23.73 A

460-958
A.R. Kopas

537-628

444-19
519-1042

30.61 A

H.R. Rogers

316-711
M. J. S. Eschwege

25.25 A

L.D. Howard

6.59 A

J.L. K. Skala

6.49

J.L. K. Skala

R.M. Scala

200-360

Acreage in default

361-230

J.M. COLLIER

H.W. Brown

14.16 A

C.L. Pugh
621-522

H. HOFFMAN
559-175
L. FRANKS
M. Schaefer

539-137
M.C. Ring

23.51 A

31

N.C. Kimmick
345-525 City of Akron

342-225

36

84.53 A

T R A C T T H R E E

395-354

45.23 A

City of Akron

460-19
368-380

M. Danku
362-628, 630

City of Akron

76.91

41

26.42 A

373-263

48.30 A

City of Akron

46

366-10, 163
City of Akron

42

100 A

311-417

City of Akron

47

193-56
362-026

32

454-414

40 A

C. Simko Match line

157-500
287-552

37

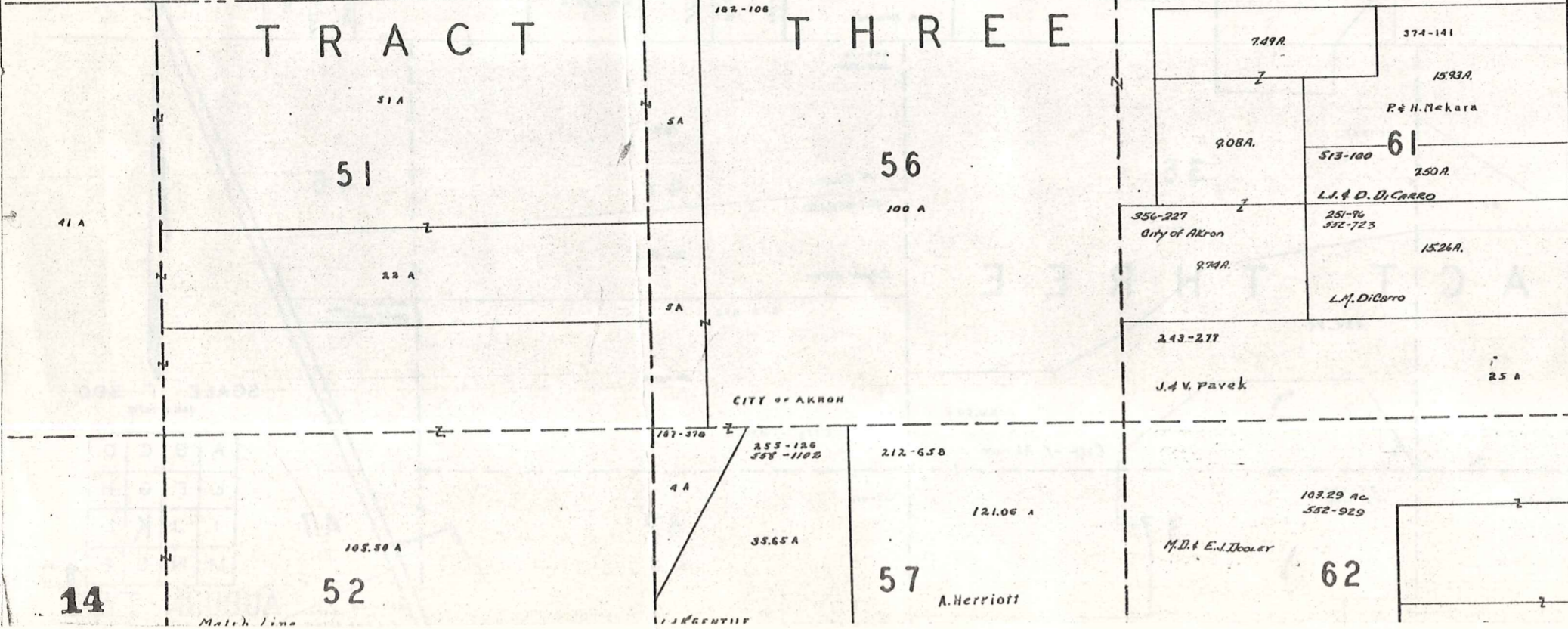
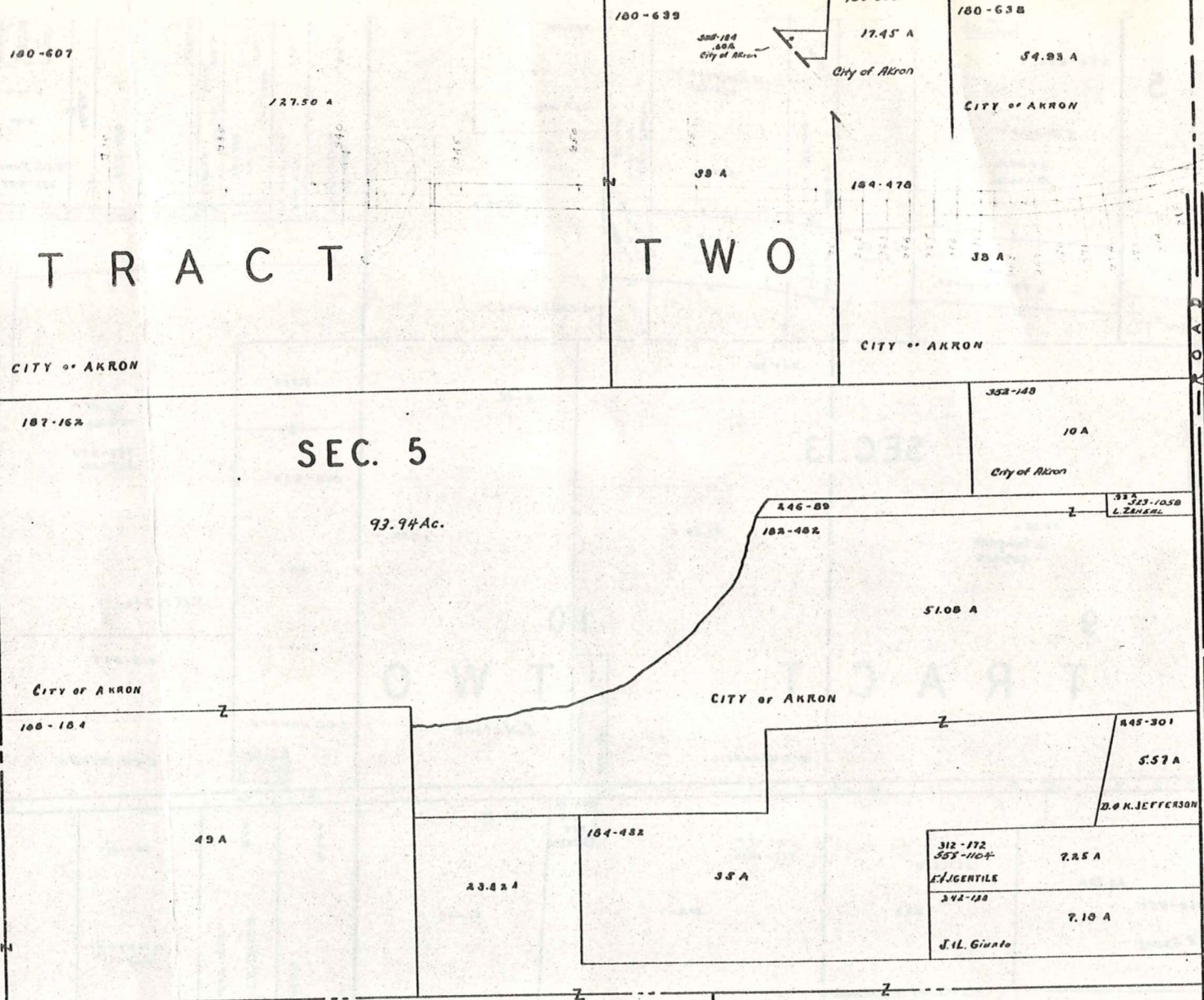
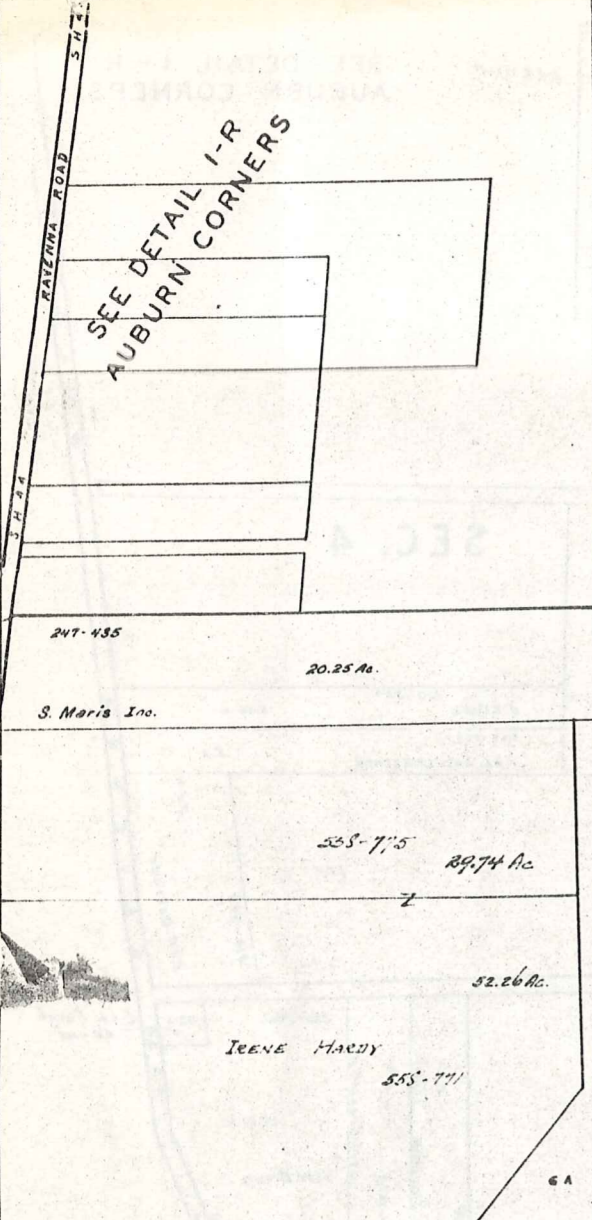
254-303
10 A

SCALE 1" = 300'
JAN 1, 1974

A	B	C	D
E	F	G	H
I	J	K	L
M	N	O	P

AUBURN TWP.

13



TROY TOWNSHIP



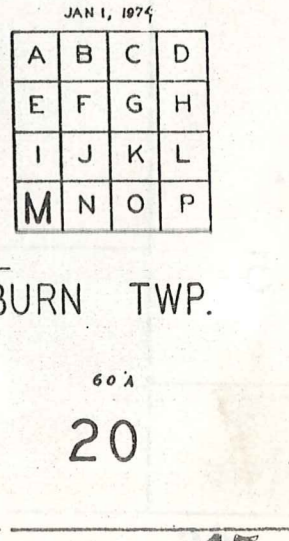
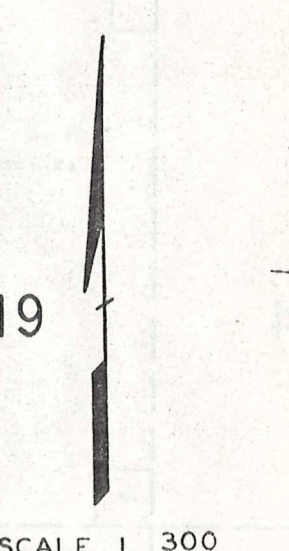
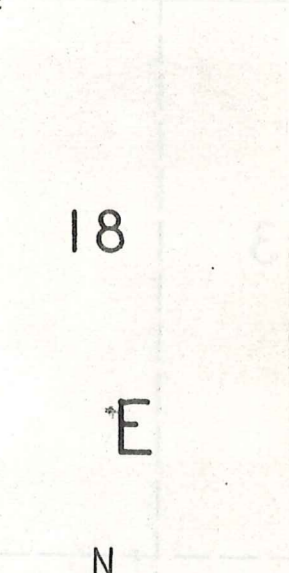
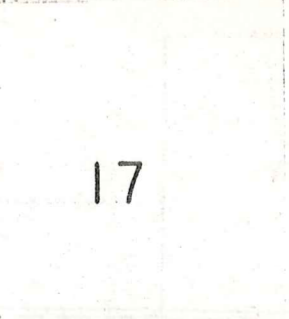
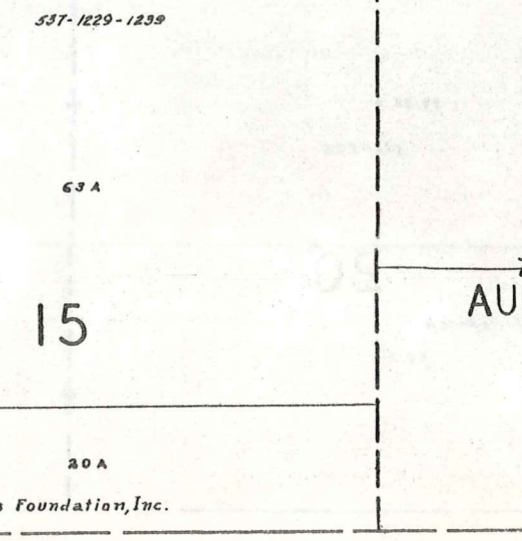
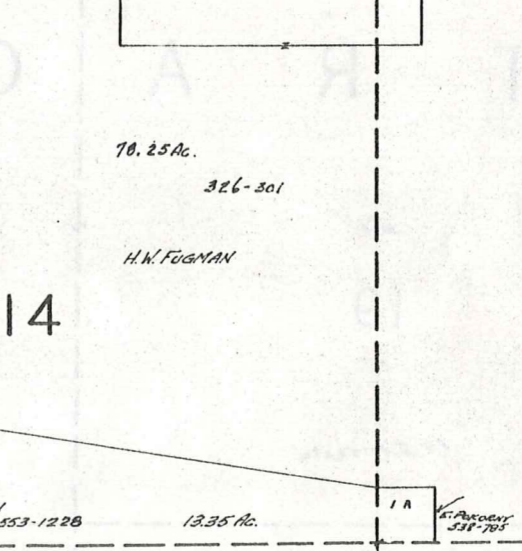
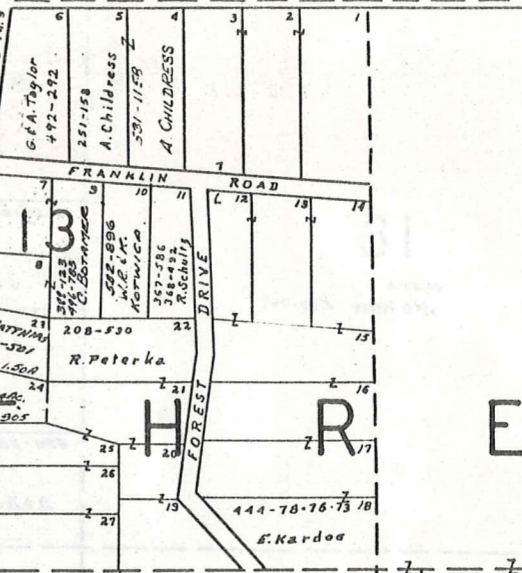
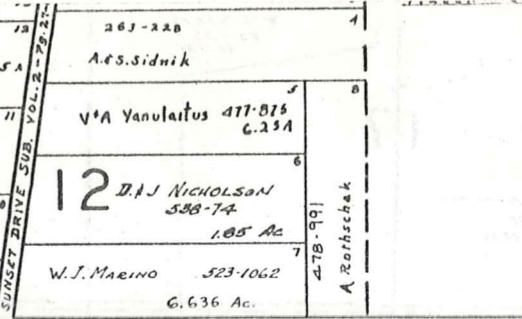
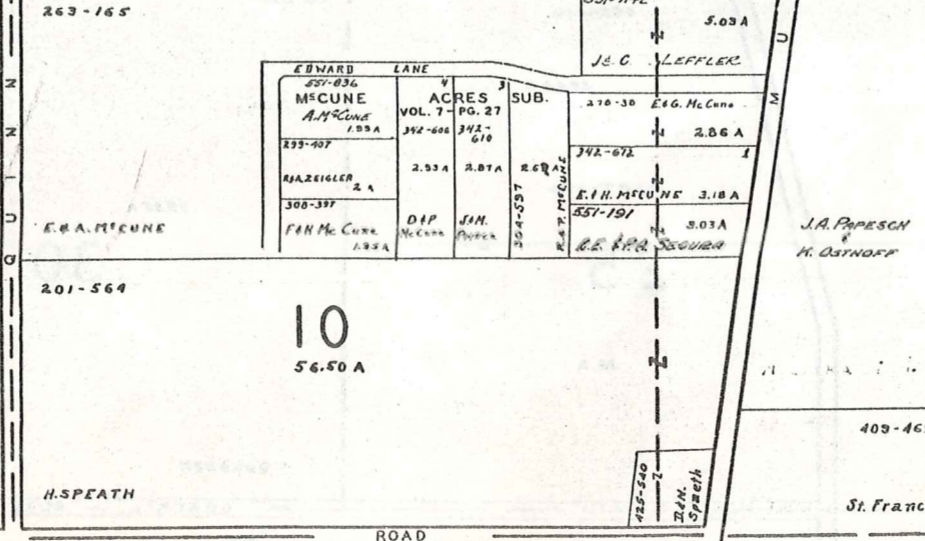
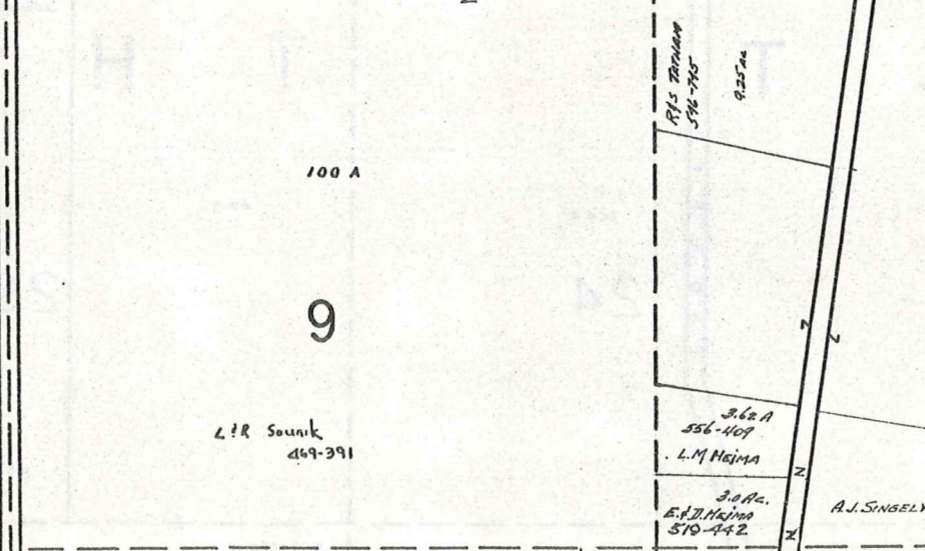
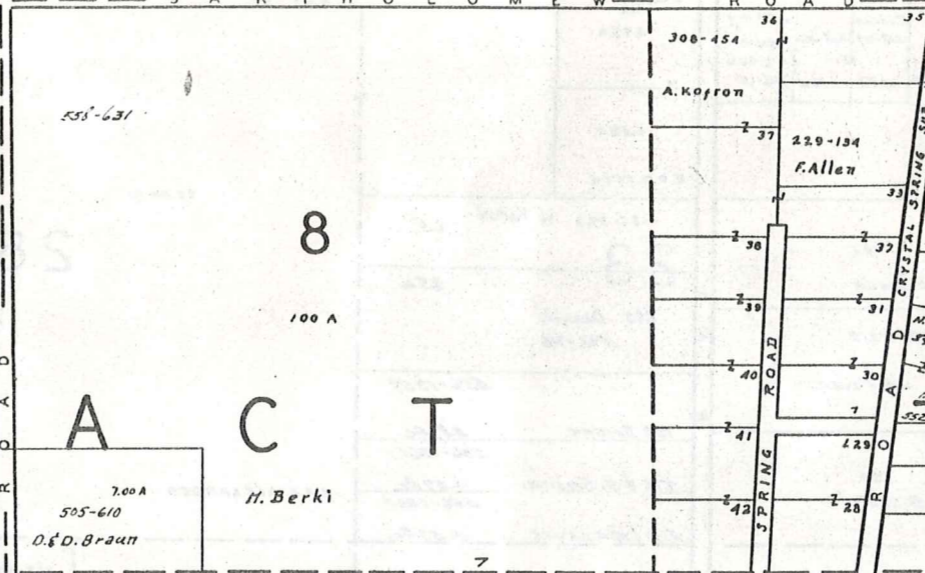
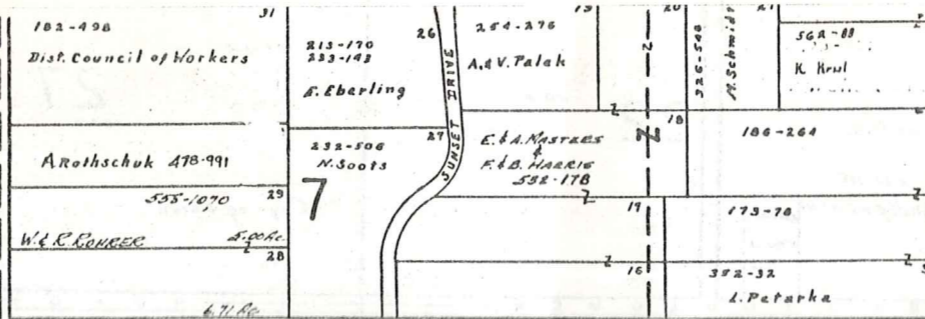
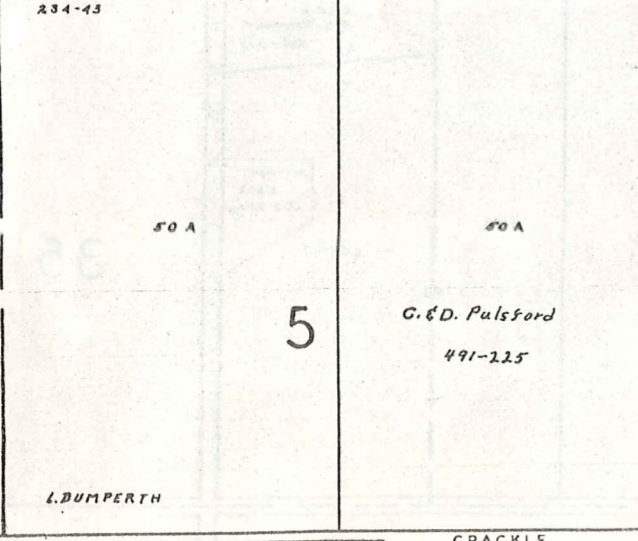
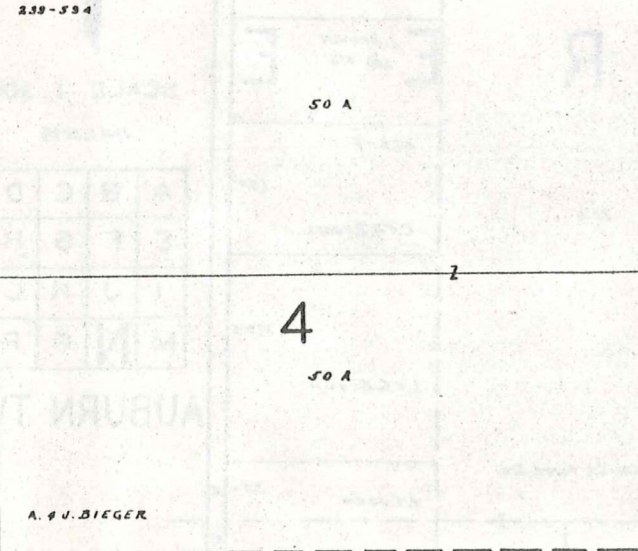
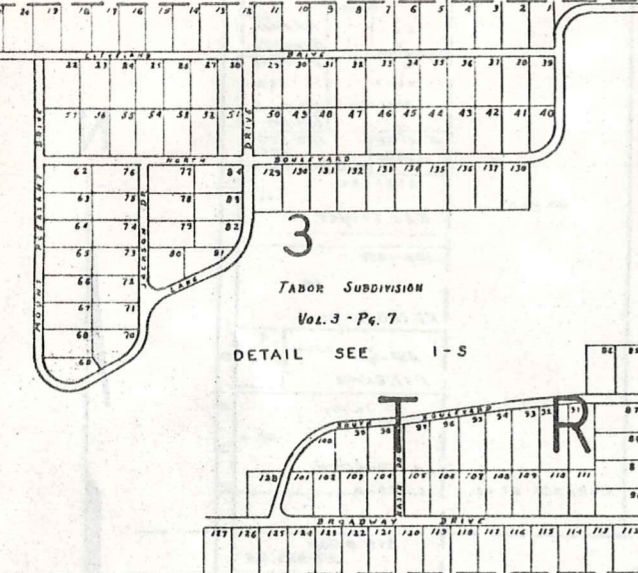
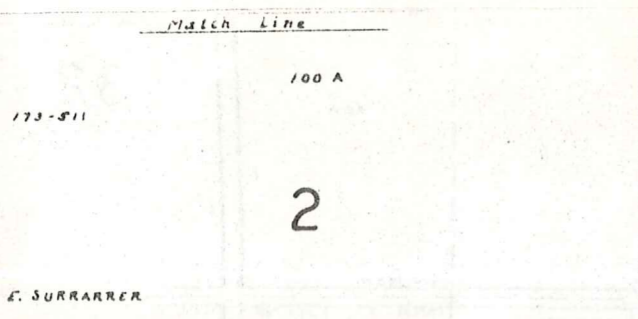
SCALE 1" = 300'
JAN 1, 1974

A	B	C	D
E	F	G	H
I	J	K	L
M	N	O	P

AUBURN TWP.

Match Line

B
A
I
N
B
R
I
D
G
E
T
O
W
N
S
H
I
P



17

18

19

19

20

20

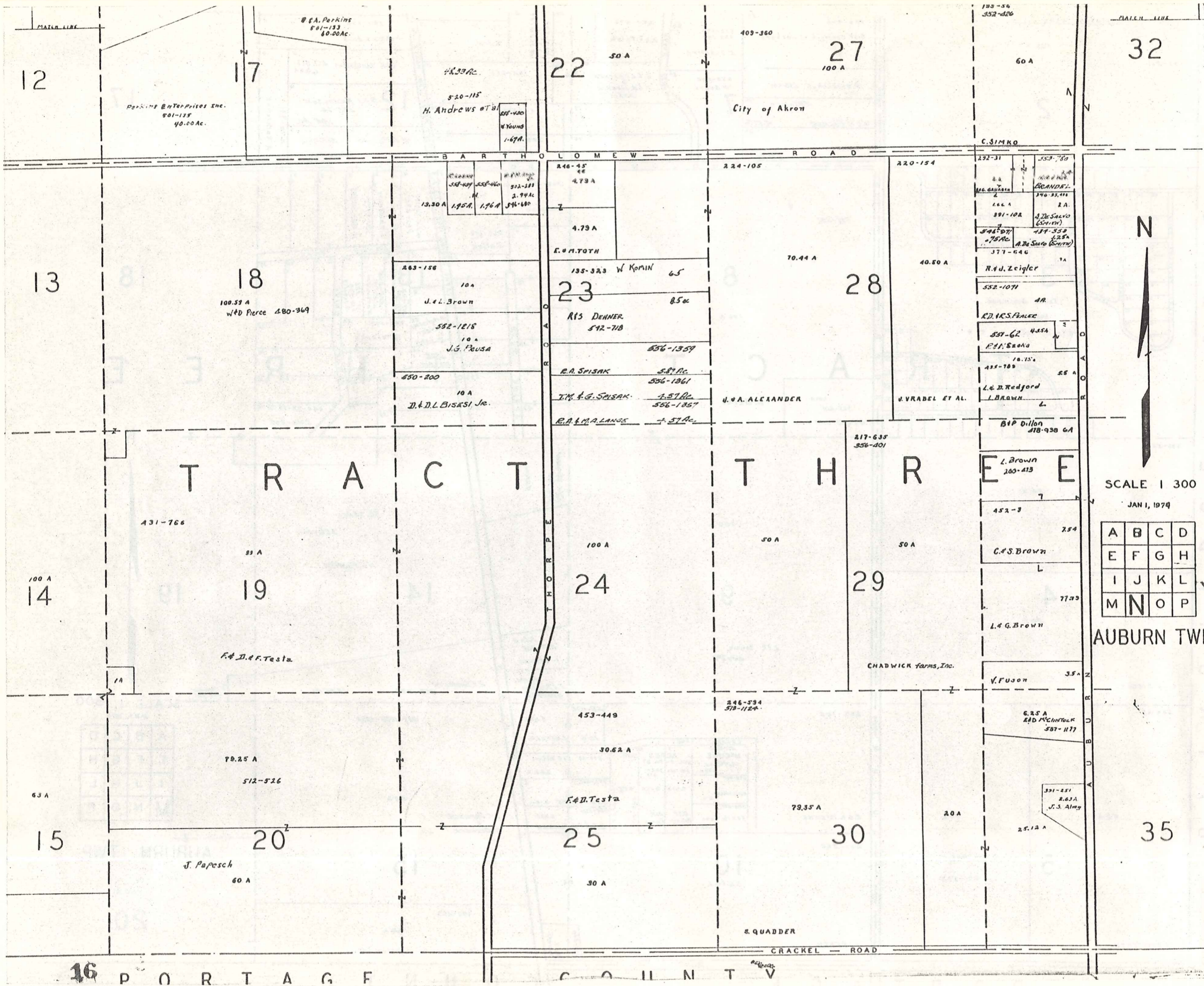
SCALE 1 300
JAN 1, 1974

A	B	C	D
E	F	G	H
I	J	K	L
M	N	O	P

AUBURN TWP.

D O R T A G F C O U N T Y

15



SCALE 1 300
JAN 1, 1974

A	B	C	D
E	F	G	H
I	J	K	L
M	N	O	P

AUBURN TWP

Match Line

193-56
300-426

32

60 A

C. J. MCG

454-414

40 A

H. PEYER et al.

454-388

10 A

D. & J. MAY

157-500
367-823

37

80 AC.

H. MAY et al.

311-417

42

100 A.

City of Akron

200-300

11.29 A

CITY of AKRON

208-226
210-106

47

241.29 A

532-649
532-651

33

71.85 A

38

100 A

TRACT

THREE

J. & J. SIMAN
RE. & K.K. KLEINMAN

220-01
208-224

460-417

5 A

CITY of AKRON

399-405

43

88.40 A

292-477

48

CITY of AKRON

71.89 A

F. SPARKS et al. 480-774

200-473

34

L. & G. Brown

243-252

22.78 A

GEAUGA COUNTY

243-286

126.72 A

44

J. SIMAN

A. & C. MASSMAN, JR.
537-322

50 A

417-182
516-1079

12 A

K. BONNER

524-116

49

47.65 A

SCALE 1" = 300'

JAN 1, 1974

A	B	C	D
E	F	G	H
I	J	K	L
M	N	O	P

AUBURN TWP.

424-885

5.17 A

L. & G. BROWN

223-443

10 A

285-286

40

75 A

217-635
356-401

35

40 A

16 A

F. & C. KOERLIN

CHADWICK Farms, Inc.

E. ALMY

CRACKEL ROAD

307-489

H. & V. YOUNG

50 A

W. & L. BODNOVICH

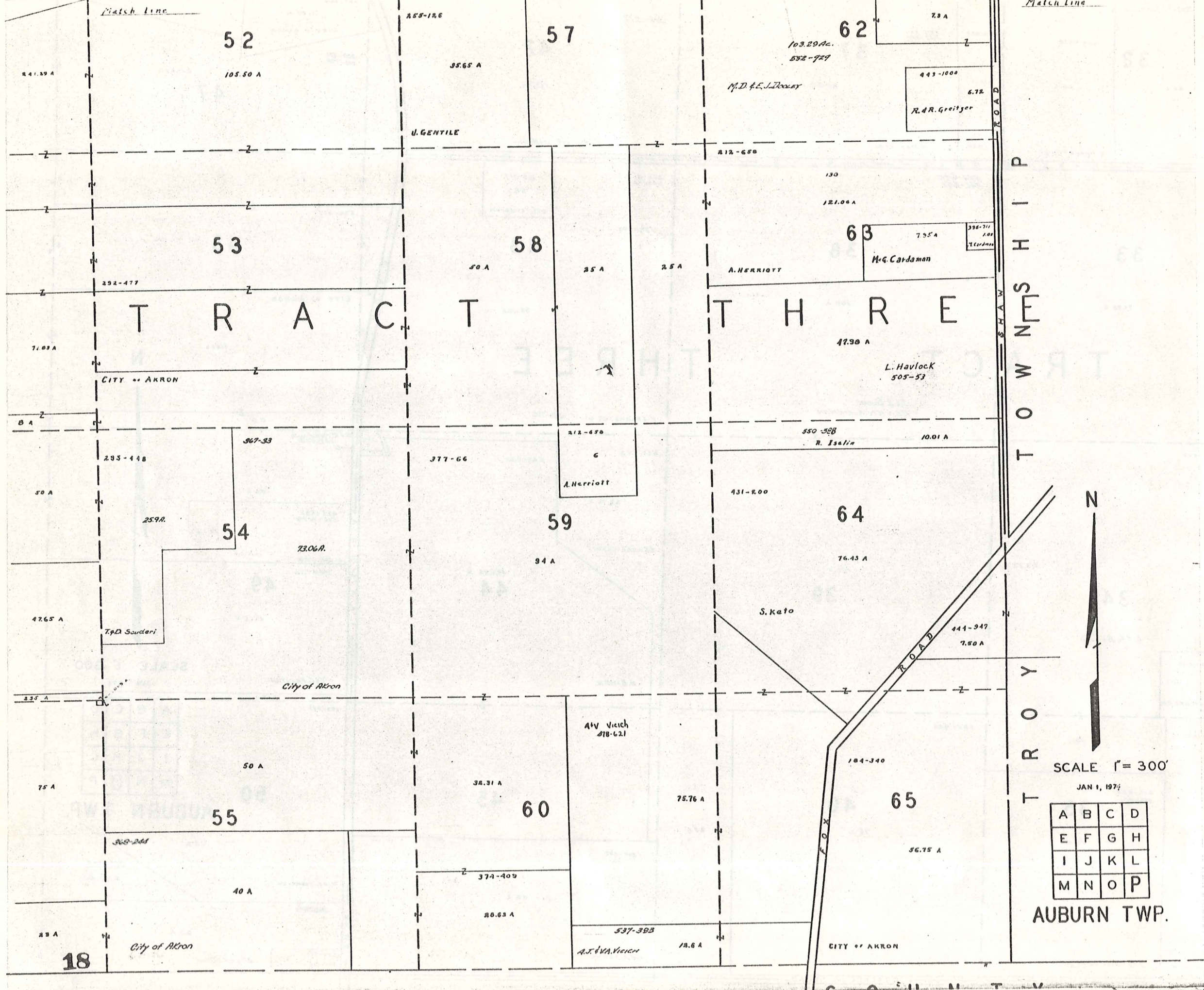
368-244

2.3 A

435-678

H. & J. FAY

City of Akron



T O W N S H I P
T R O Y



SCALE 1" = 300'

JAN 1, 1974

A	B	C	D
E	F	G	H
I	J	K	L
M	N	O	P

AUBURN TWP.

18

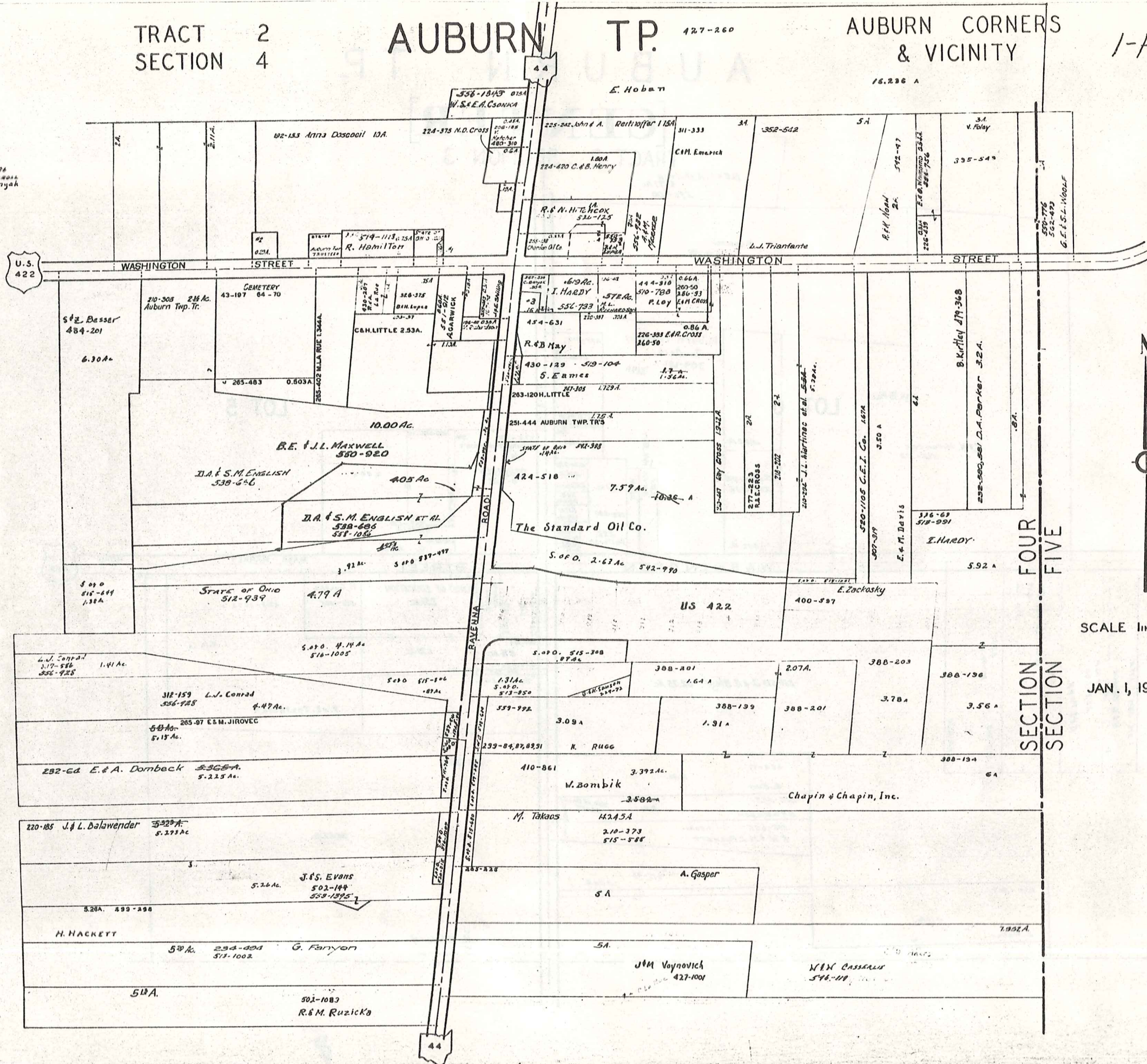
TRACT 2
SECTION 4

AUBURN TP. 427-260

AUBURN CORNERS & VICINITY

1-R

1. B. DAVIS 464-494
2. 518-78 - T.M. CURRAN
3. 515-843 C.M. BENYAK



U.S. 422

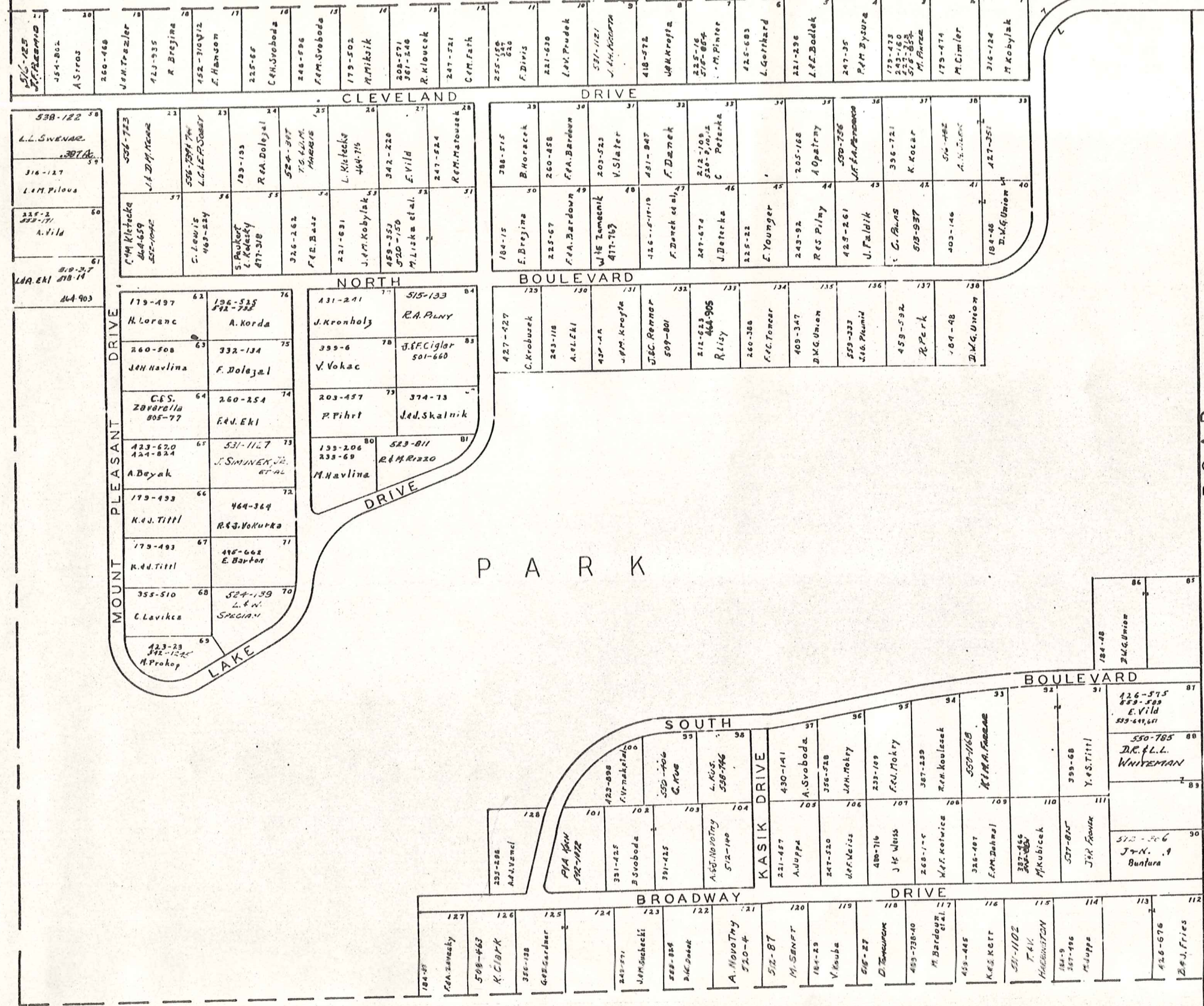
SECTION FOUR
SECTION FIVE

SCALE 1in = 25ch =

JAN. 1, 1974

TABOR SUBDIVISION

VOL. 3 - PG. 7 PLATS



1-S

N

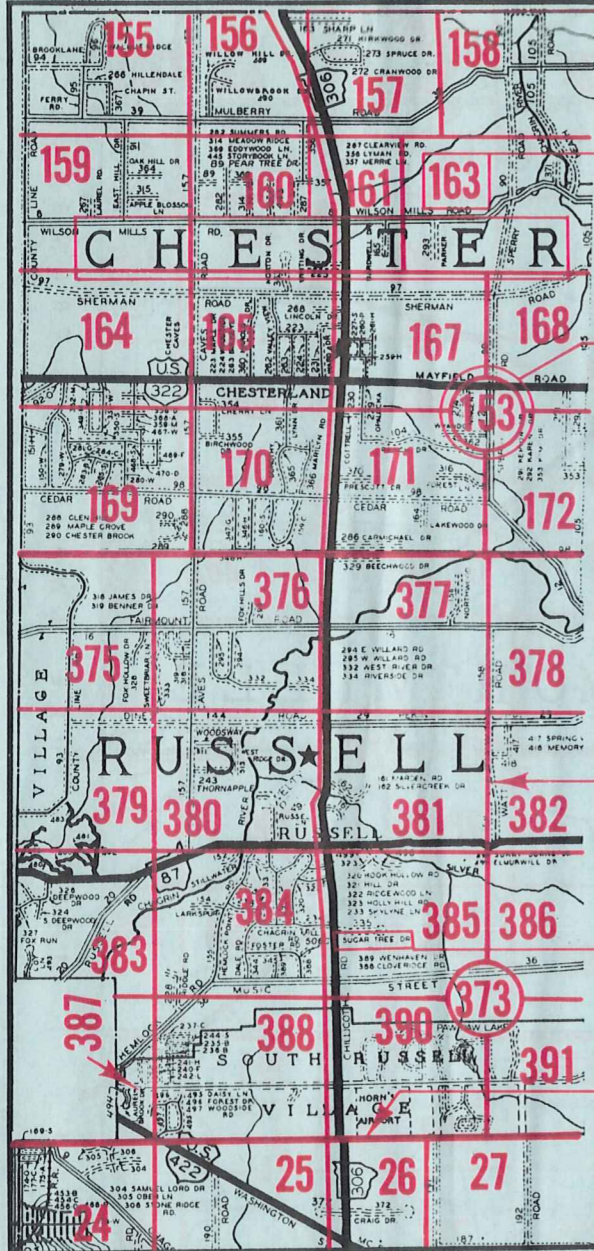
SCALE 1" = 100'
JAN. 1971

AUBURN TW

21
1 S

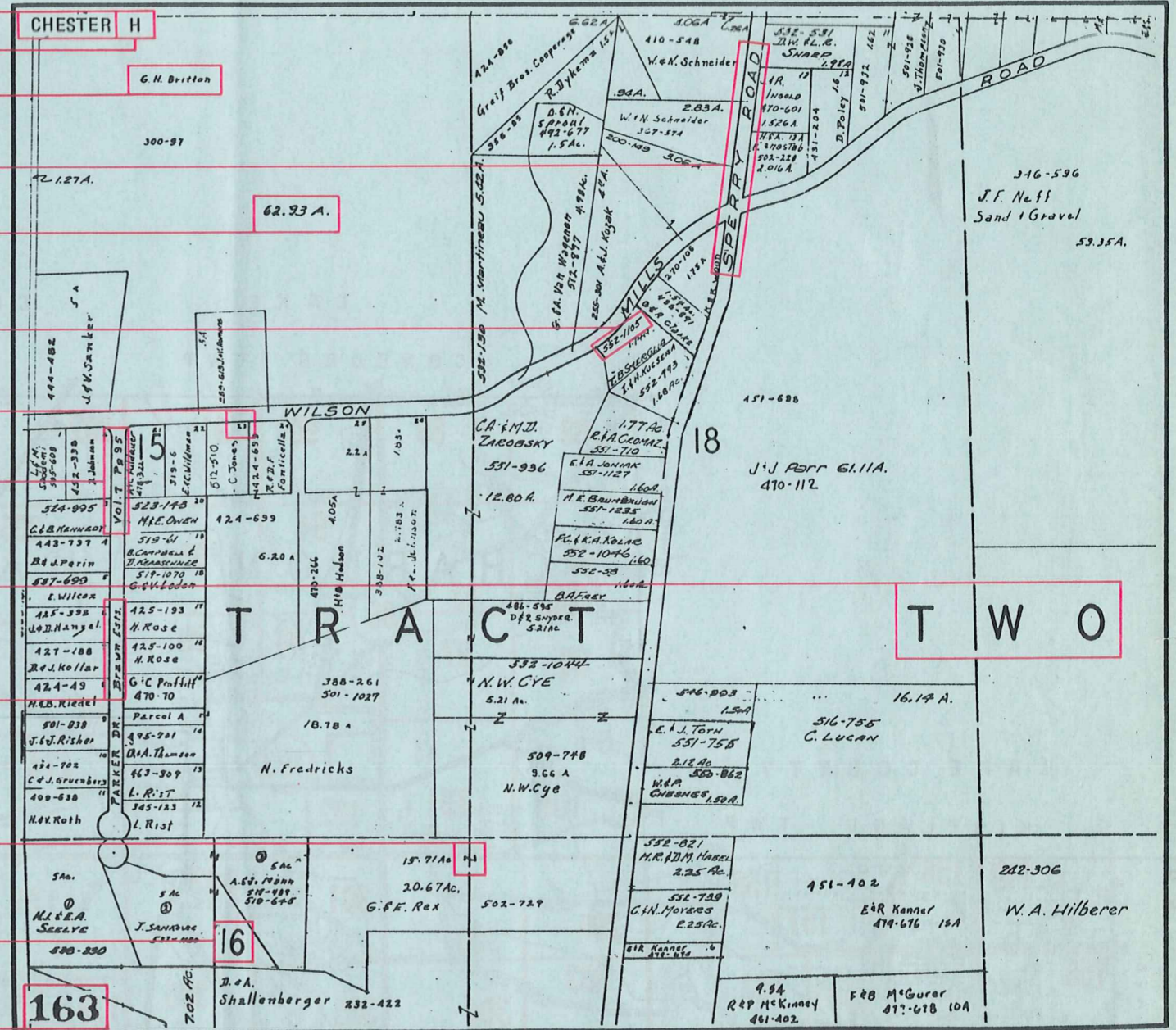
Explanation and Use Sheet for Geauga County, Ohio

SAMPLE (PARTIAL) COUNTY INDEX MAP



- Township Name
- Map Page Number (Or Letter)
- Owners Name
- Street Name
- Acreage
- Municipality Index Beginning Atlas Page Number
- Deed Book & Page
- Subdivision Lot Number
- Plat Book & Page
- Tract Number
- Atlas Page Boundary
- Subdivision Name
- Street Name
- Denotes Continuous Ownership
- Municipality Index Atlas Page Boundary
- Tract Lot Number
- Atlas Page Number

SAMPLE (PARTIAL) MAP PAGE



USE OF THE MAP VOLUME

1. LOCATE THE GENERAL AREA OF INTEREST ON THE COUNTY INDEX MAP, ATLAS PAGE 'B'.
2. **A. IF PROPERTY IS IN A TOWNSHIP**, NOTE THE ATLAS PAGE NUMBER. TURN TO THE PAGE INDICATED AND LOCATE SPECIFIC PARCEL OF INTEREST.
NOTE: ON SOME MAPS YOU MAY BE REFERRED TO A DETAIL SHEET SHOWING AN ENLARGEMENT OF THE AREA. THESE MAPS ARE FOUND AT THE END OF THE REGULAR MAP PAGES IN EACH TOWNSHIP EITHER IN ALPHABETICAL OR NUMERICAL SEQUENCE.
3. **B. IF PROPERTY IS IN A MUNICIPALITY**, REFER TO THE TABLE OF CONTENTS, ATLAS PAGE 'C', AND NOTE THE BEGINNING ATLAS PAGE NUMBER FOR THE MUNICIPALITY OF INTEREST.
 - (1) TURN TO THE PAGE INDICATED. ON THIS PAGE WILL APPEAR AN INDEX MAP FOR THAT MUNICIPALITY.
 - (2) LOCATE SPECIFIC AREA OF INTEREST AND NOTE THE MAP PAGE NUMBER.
NOTE: DO NOT CONFUSE THE MAP PAGE NUMBER WITH THE ATLAS PAGE NUMBER IN THESE MUNICIPALITIES.
 - (3) FOLLOW EITHER ALPHABETICAL OR NUMERICAL SEQUENCE TO THE MAP PAGE INDICATED AND LOCATE SPECIFIC PARCEL OF INTEREST.